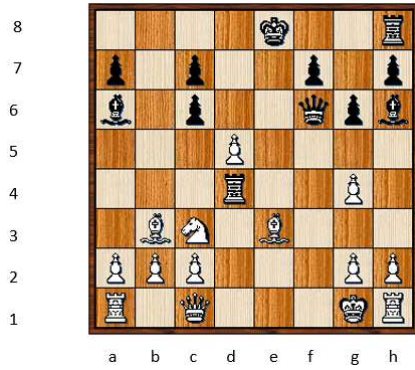


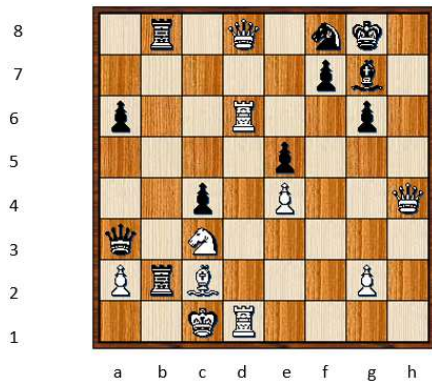
Source: Polgár, L. (1995). Chess: 5334 Problems, Combinations, and Games. United States: Black Dog & Leventhal Publishers.

B to move, mate in 2. Polgar 1255.



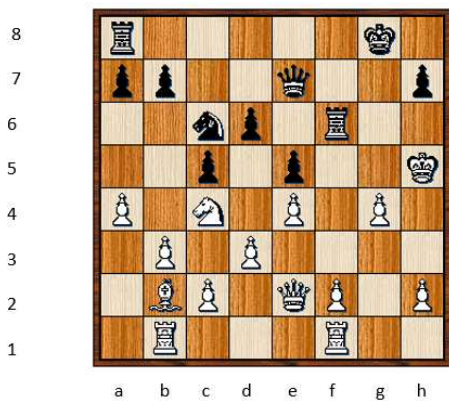
.....

B to move, mate in 2. Polgar 1256.



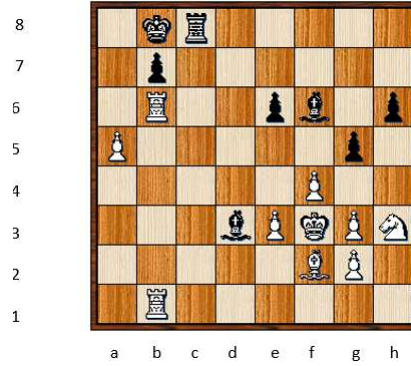
.....

B to move, mate in 2. Polgar 1257.



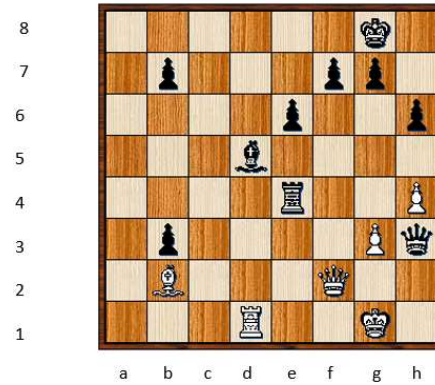
.....

B to move, mate in 2. Polgar 1258.



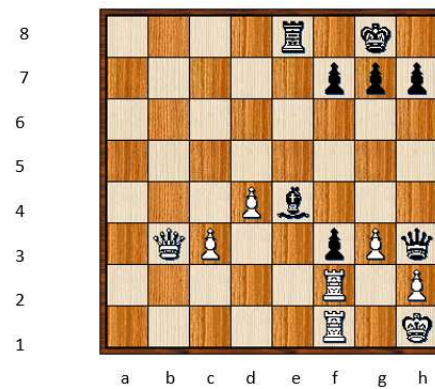
.....

B to move, mate in 2. Polgar 1259.



.....

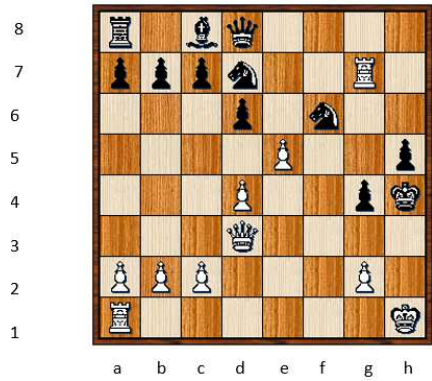
B to move, mate in 2. Polgar 1260.



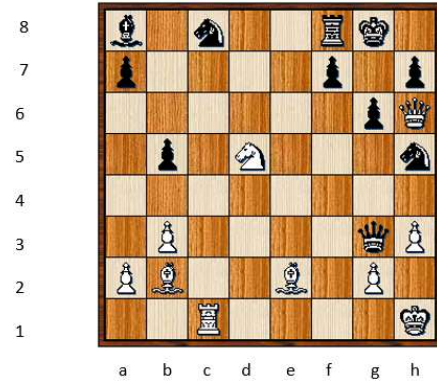
.....

Try to solve just by looking, or by setting up on board. Use notation. Stumped by a problem? Ask coach for help. Remember: Can't give checkmate without giving check!

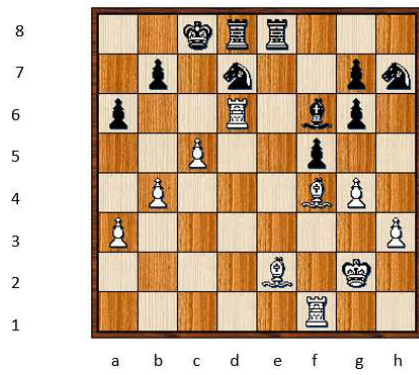
W to move, mate in 2 Polgar 1249.



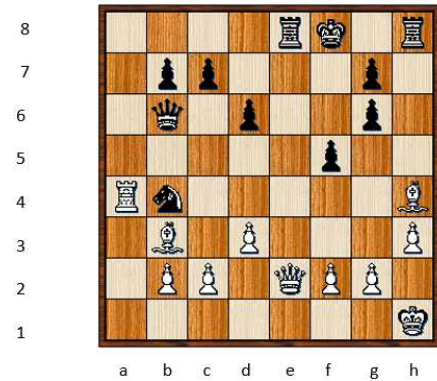
W to move, mate in 2. Polgar 1252.



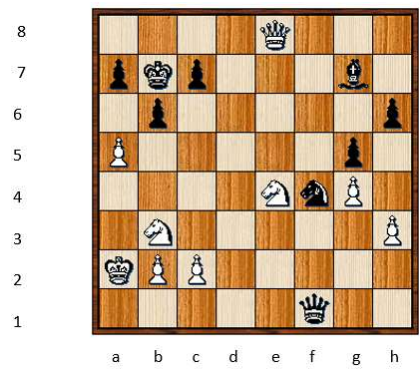
W to move, mate in 2. Polgar 1250.



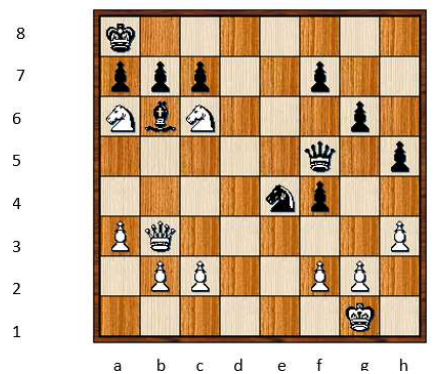
W to move, mate in 2. Polgar 1253.



W to move, mate in 2. Polgar 1251.



W to move, mate in 2. Polgar 1254.



Try to solve just by looking, or by setting up on board. Use notation. Stumped by a problem? Ask coach for help. Remember: Can't give checkmate without giving check!